

SMMA

# Watertown School District

*Facility Master Plan*

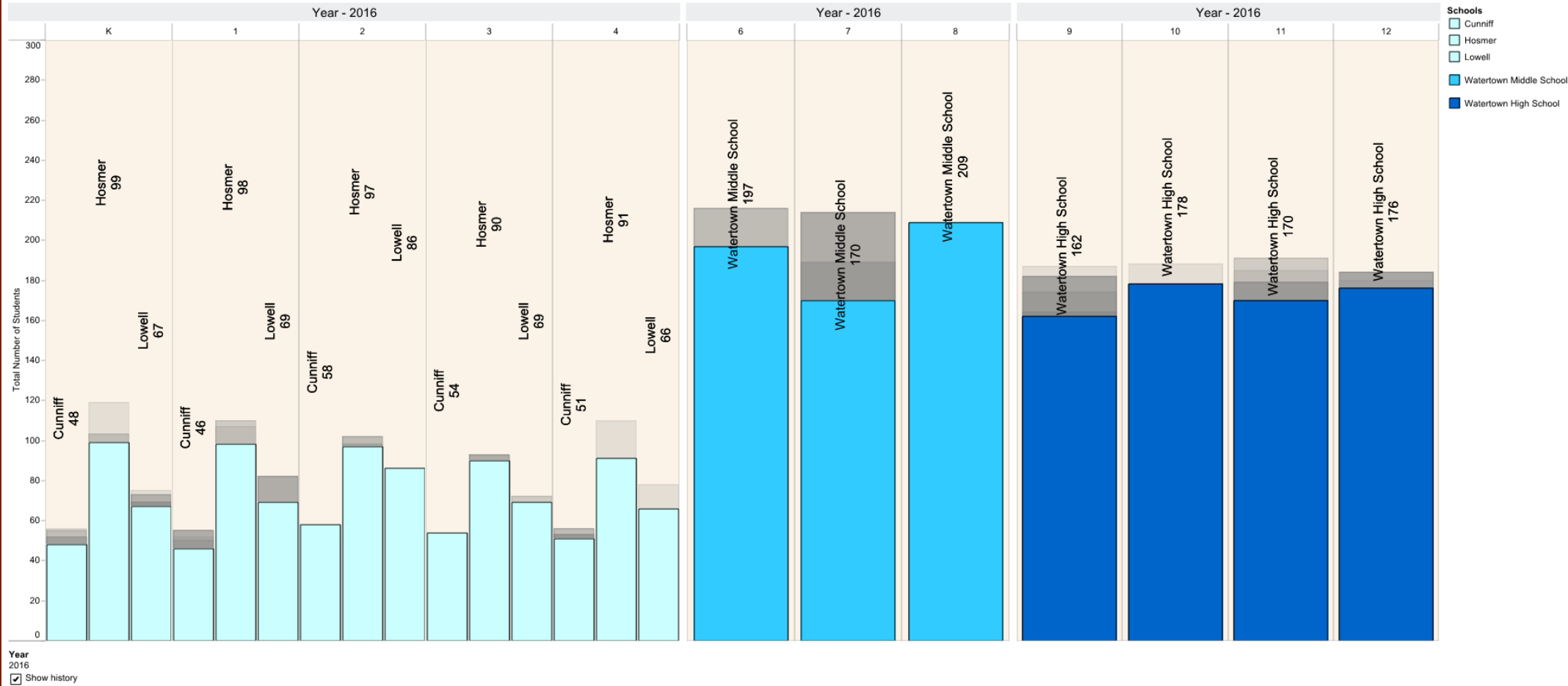
*Community Forum Number 2*

July 27, 2016

# Watertown School District

## Community Forum Number 2

2012-2025 Total Number of Students per School, by Grade

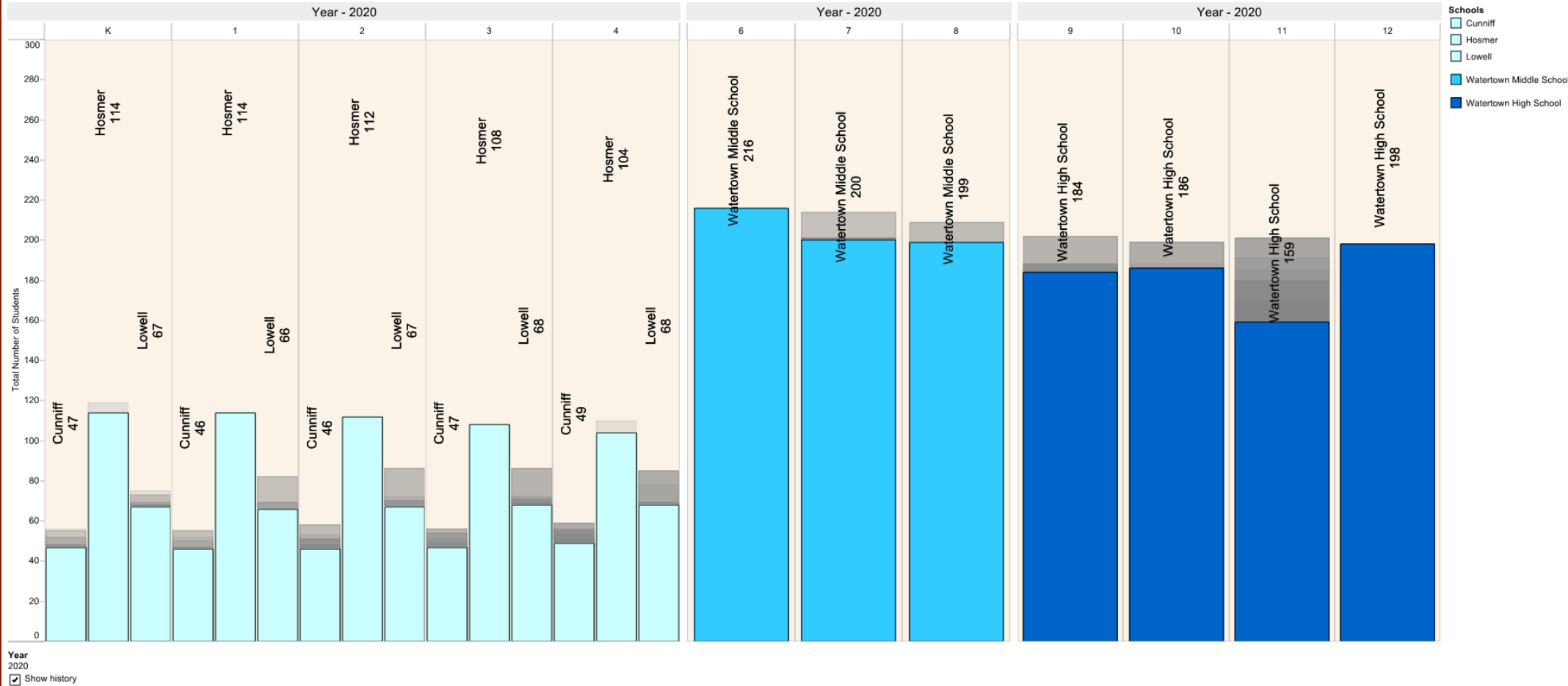


- I. Welcome and Introduction
- II. Demographics – 5 & 10 year
- III. Watertown Map Demographics
- IV. Building Area Comparison
- V. Student & Facility Needs
- VI. Animation - Delivery Models
- VII. Possibilities thus far
- VIII. Next steps

# Watertown School District

## Community Forum Number 2

2012-2025 Total Number of Students per School, by Grade

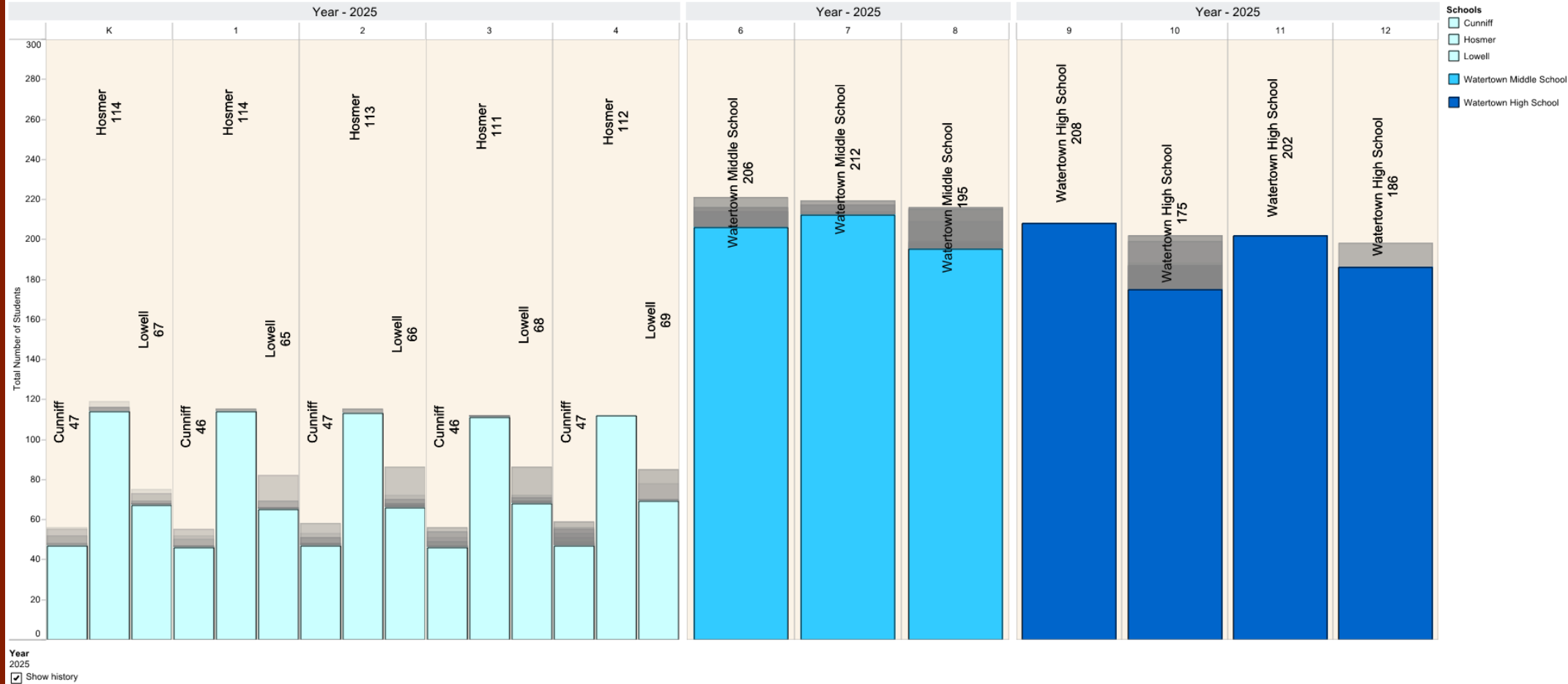


- I. Welcome and Introduction
- II. Demographics – 5 & 10 year
- III. Watertown Map Demographics
- IV. Building Area Comparison
- V. Student & Facility Needs
- VI. Animation - Delivery Models
- VII. Possibilities thus far
- VIII. Next steps

# Watertown School District

## Community Forum Number 2

2012-2025 Total Number of Students per School, by Grade



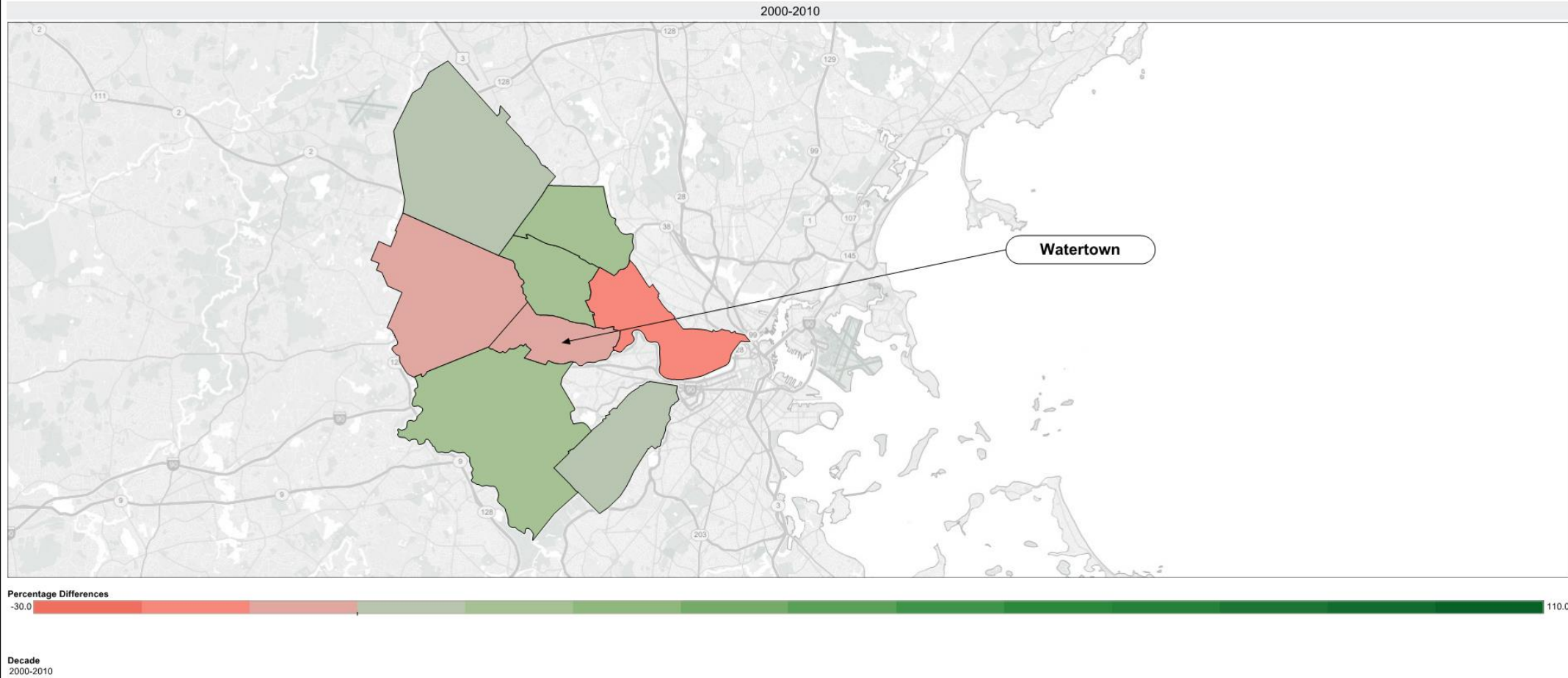
- I. Welcome and Introduction
- II. Demographics – 5 & 10 year
- III. Watertown Map Demographics
- IV. Building Area Comparison
- V. Student & Facility Needs
- VI. Animation - Delivery Models
- VII. Possibilities thus far
- VIII. Next steps

# Watertown School District

## Community Forum Number 2

- I. Welcome and Introduction
- II. Demographics – 5 & 10 year
- III. Watertown Map Demographics
- IV. Building Area Comparison
- V. Student & Facility Needs
- VI. Animation - Delivery Models
- VII. Possibilities thus far
- VIII. Next steps

1990-2030 Population Change in School Age Children, by Decade

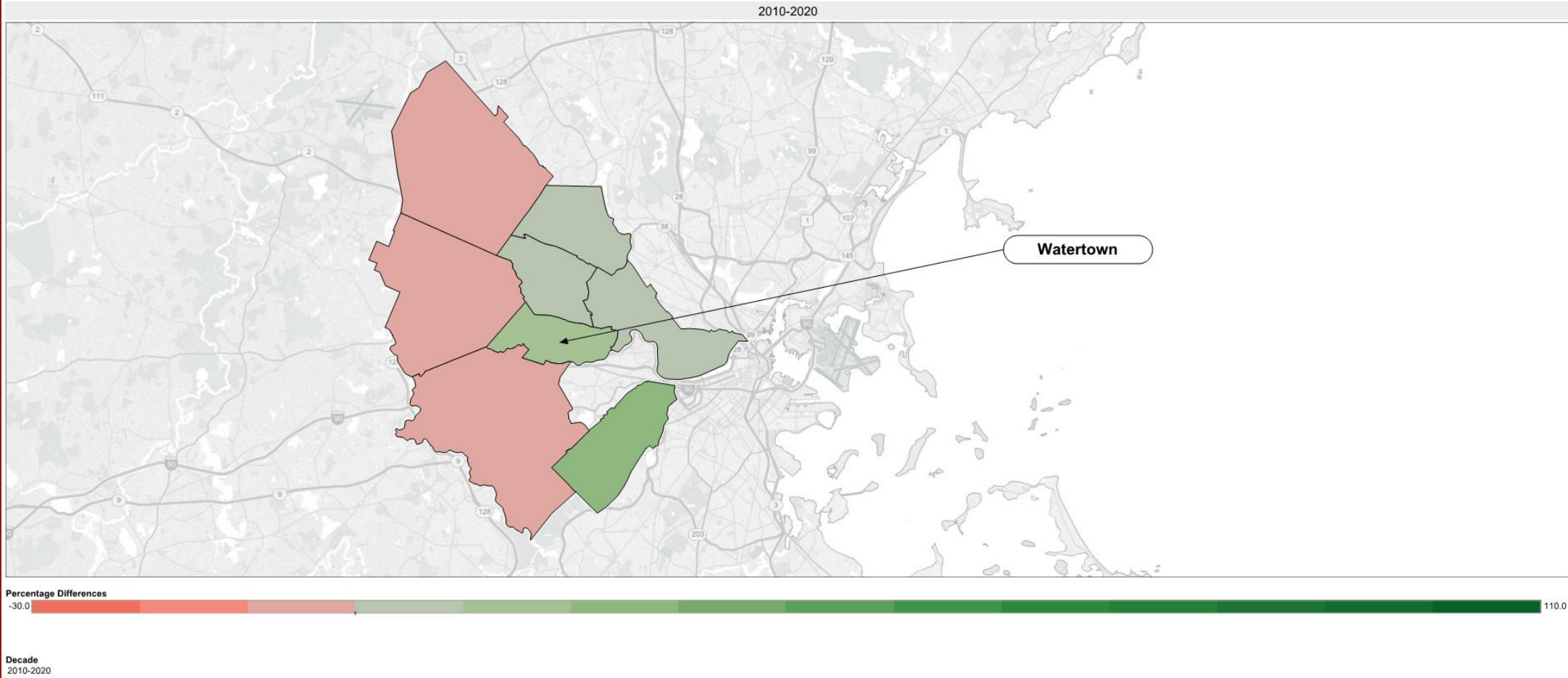


# Watertown School District

## Community Forum Number 2

- I. Welcome and Introduction
- II. Demographics – 5 & 10 year
- III. Watertown Map  
Demographics
- IV. Building Area Comparison
- V. Student & Facility Needs
- VI. Animation - Delivery Models
- VII. Possibilities thus far
- VIII. Next steps

1990-2030 Population Change in School Age Children, by Decade



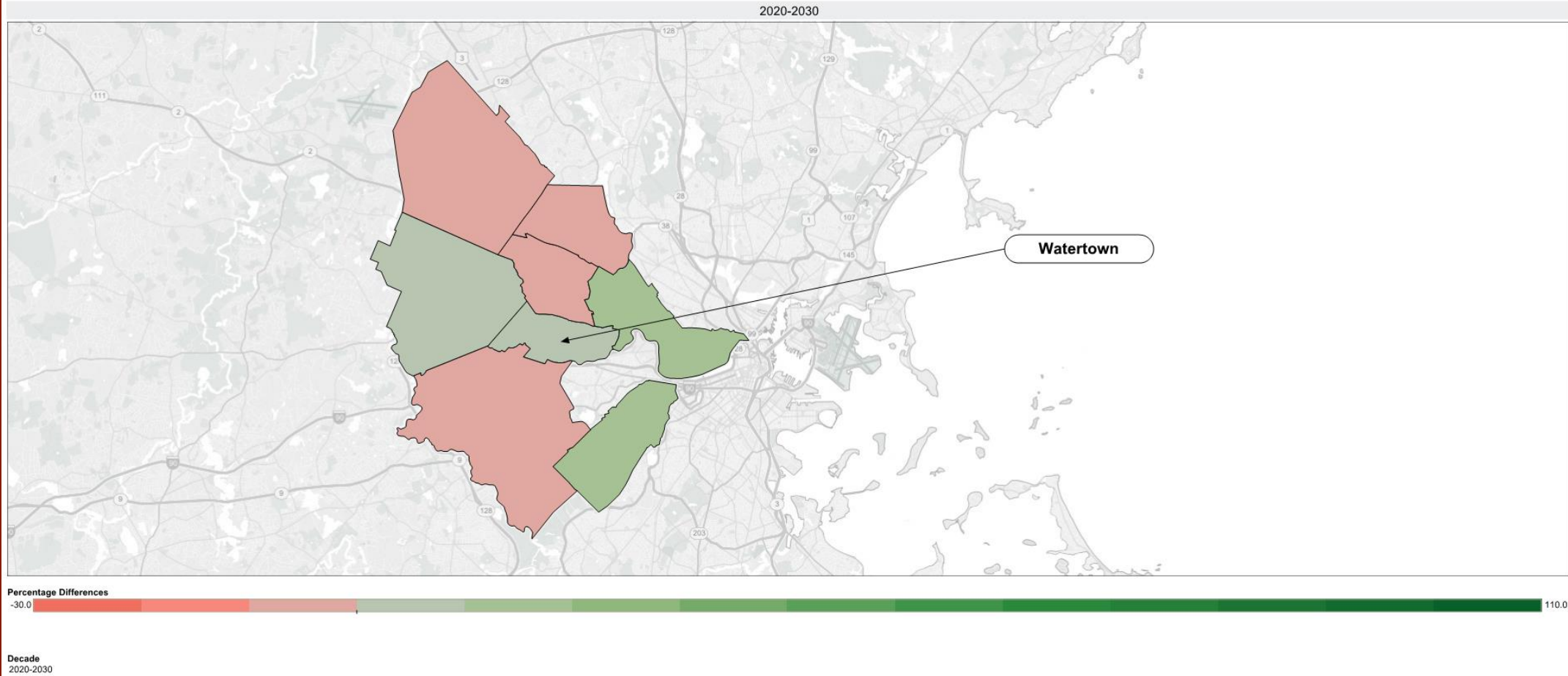
27 July 2016

# Watertown School District

## Community Forum Number 2

- I. Welcome and Introduction
- II. Demographics – 5 & 10 year
- III. Watertown Map Demographics
- IV. Building Area Comparison
- V. Student & Facility Needs
- VI. Animation - Delivery Models
- VII. Possibilities thus far
- VIII. Next steps

1990-2030 Population Change in School Age Children, by Decade



27 July 2016

# Watertown School District

## Community Forum Number 2

- I. Welcome and Introduction
- II. Demographics – 5 & 10 year
- III. Watertown Map  
Demographics
- IV. Building Area Comparison
- V. Student & Facility Needs
- VI. Animation - Delivery Models
- VII. Possibilities thus far
- VIII. Next steps

| Cunniff Elementary |         |         |         | Cunniff Elementary |         |         |         | Cunniff Elementary |         |         |         |
|--------------------|---------|---------|---------|--------------------|---------|---------|---------|--------------------|---------|---------|---------|
| Category           | 2016    | 2021    | 2025    | Category           | 2016    | 2021    | 2025    | Category           | 2016    | 2021    | 2025    |
| Site               | 106,000 | 106,000 | 106,000 | Site               | 106,000 | 106,000 | 106,000 | Site               | 106,000 | 106,000 | 106,000 |
| Building           | 34,150  | 34,150  | 34,150  | Building           | 34,150  | 34,150  | 34,150  | Building           | 34,150  | 34,150  | 34,150  |
| MSBA               | 56,150  | 56,150  | 56,150  | MSBA               | 56,150  | 56,150  | 56,150  | MSBA               | 56,150  | 56,150  | 56,150  |
| 2016               | 315     | 315     | 315     | 2016               | 315     | 315     | 315     | 2016               | 315     | 315     | 315     |
| 2021               | 286     | 286     | 286     | 2021               | 286     | 286     | 286     | 2021               | 286     | 286     | 286     |
| 2025               | 281     | 281     | 281     | 2025               | 281     | 281     | 281     | 2025               | 281     | 281     | 281     |

| Cunniff Elementary |         |         |         | Cunniff Elementary |         |         |         | Cunniff Elementary |         |         |         |
|--------------------|---------|---------|---------|--------------------|---------|---------|---------|--------------------|---------|---------|---------|
| Category           | 2016    | 2021    | 2025    | Category           | 2016    | 2021    | 2025    | Category           | 2016    | 2021    | 2025    |
| Site               | 106,000 | 106,000 | 106,000 | Site               | 106,000 | 106,000 | 106,000 | Site               | 106,000 | 106,000 | 106,000 |
| Building           | 34,150  | 34,150  | 34,150  | Building           | 34,150  | 34,150  | 34,150  | Building           | 34,150  | 34,150  | 34,150  |
| MSBA               | 56,150  | 56,150  | 56,150  | MSBA               | 56,150  | 56,150  | 56,150  | MSBA               | 56,150  | 56,150  | 56,150  |
| 2016               | 315     | 315     | 315     | 2016               | 315     | 315     | 315     | 2016               | 315     | 315     | 315     |
| 2021               | 286     | 286     | 286     | 2021               | 286     | 286     | 286     | 2021               | 286     | 286     | 286     |
| 2025               | 281     | 281     | 281     | 2025               | 281     | 281     | 281     | 2025               | 281     | 281     | 281     |

| Cunniff Elementary |         |         |         | Cunniff Elementary |         |         |         | Cunniff Elementary |         |         |         |
|--------------------|---------|---------|---------|--------------------|---------|---------|---------|--------------------|---------|---------|---------|
| Category           | 2016    | 2021    | 2025    | Category           | 2016    | 2021    | 2025    | Category           | 2016    | 2021    | 2025    |
| Site               | 106,000 | 106,000 | 106,000 | Site               | 106,000 | 106,000 | 106,000 | Site               | 106,000 | 106,000 | 106,000 |
| Building           | 34,150  | 34,150  | 34,150  | Building           | 34,150  | 34,150  | 34,150  | Building           | 34,150  | 34,150  | 34,150  |
| MSBA               | 56,150  | 56,150  | 56,150  | MSBA               | 56,150  | 56,150  | 56,150  | MSBA               | 56,150  | 56,150  | 56,150  |
| 2016               | 315     | 315     | 315     | 2016               | 315     | 315     | 315     | 2016               | 315     | 315     | 315     |
| 2021               | 286     | 286     | 286     | 2021               | 286     | 286     | 286     | 2021               | 286     | 286     | 286     |
| 2025               | 281     | 281     | 281     | 2025               | 281     | 281     | 281     | 2025               | 281     | 281     | 281     |

| Lowell Elementary |         |         |         | Lowell Elementary |         |         |         | Lowell Elementary |         |         |         |
|-------------------|---------|---------|---------|-------------------|---------|---------|---------|-------------------|---------|---------|---------|
| Category          | 2016    | 2021    | 2025    | Category          | 2016    | 2021    | 2025    | Category          | 2016    | 2021    | 2025    |
| Site              | 151,100 | 151,100 | 151,100 | Site              | 151,100 | 151,100 | 151,100 | Site              | 151,100 | 151,100 | 151,100 |
| Building          | 81,720  | 81,720  | 81,720  | Building          | 81,720  | 81,720  | 81,720  | Building          | 81,720  | 81,720  | 81,720  |
| MSBA              | 69,130  | 69,130  | 69,130  | MSBA              | 69,130  | 69,130  | 69,130  | MSBA              | 69,130  | 69,130  | 69,130  |
| 2016              | 415     | 415     | 415     | 2016              | 415     | 415     | 415     | 2016              | 415     | 415     | 415     |
| 2021              | 410     | 410     | 410     | 2021              | 410     | 410     | 410     | 2021              | 410     | 410     | 410     |
| 2025              | 404     | 404     | 404     | 2025              | 404     | 404     | 404     | 2025              | 404     | 404     | 404     |

| Lowell Elementary |         |         |         | Lowell Elementary |         |         |         | Lowell Elementary |         |         |         |
|-------------------|---------|---------|---------|-------------------|---------|---------|---------|-------------------|---------|---------|---------|
| Category          | 2016    | 2021    | 2025    | Category          | 2016    | 2021    | 2025    | Category          | 2016    | 2021    | 2025    |
| Site              | 151,100 | 151,100 | 151,100 | Site              | 151,100 | 151,100 | 151,100 | Site              | 151,100 | 151,100 | 151,100 |
| Building          | 81,720  | 81,720  | 81,720  | Building          | 81,720  | 81,720  | 81,720  | Building          | 81,720  | 81,720  | 81,720  |
| MSBA              | 69,130  | 69,130  | 69,130  | MSBA              | 69,130  | 69,130  | 69,130  | MSBA              | 69,130  | 69,130  | 69,130  |
| 2016              | 415     | 415     | 415     | 2016              | 415     | 415     | 415     | 2016              | 415     | 415     | 415     |
| 2021              | 410     | 410     | 410     | 2021              | 410     | 410     | 410     | 2021              | 410     | 410     | 410     |
| 2025              | 404     | 404     | 404     | 2025              | 404     | 404     | 404     | 2025              | 404     | 404     | 404     |

| Lowell Elementary |         |         |         | Lowell Elementary |         |         |         | Lowell Elementary |         |         |         |
|-------------------|---------|---------|---------|-------------------|---------|---------|---------|-------------------|---------|---------|---------|
| Category          | 2016    | 2021    | 2025    | Category          | 2016    | 2021    | 2025    | Category          | 2016    | 2021    | 2025    |
| Site              | 151,100 | 151,100 | 151,100 | Site              | 151,100 | 151,100 | 151,100 | Site              | 151,100 | 151,100 | 151,100 |
| Building          | 81,720  | 81,720  | 81,720  | Building          | 81,720  | 81,720  | 81,720  | Building          | 81,720  | 81,720  | 81,720  |
| MSBA              | 69,130  | 69,130  | 69,130  | MSBA              | 69,130  | 69,130  | 69,130  | MSBA              | 69,130  | 69,130  | 69,130  |
| 2016              | 415     | 415     | 415     | 2016              | 415     | 415     | 415     | 2016              | 415     | 415     | 415     |
| 2021              | 410     | 410     | 410     | 2021              | 410     | 410     | 410     | 2021              | 410     | 410     | 410     |
| 2025              | 404     | 404     | 404     | 2025              | 404     | 404     | 404     | 2025              | 404     | 404     | 404     |

| Hosmer Elementary |         |         |         | Hosmer Elementary |         |         |         | Hosmer Elementary |         |         |         |
|-------------------|---------|---------|---------|-------------------|---------|---------|---------|-------------------|---------|---------|---------|
| Category          | 2016    | 2021    | 2025    | Category          | 2016    | 2021    | 2025    | Category          | 2016    | 2021    | 2025    |
| Site              | 346,700 | 346,700 | 346,700 | Site              | 346,700 | 346,700 | 346,700 | Site              | 346,700 | 346,700 | 346,700 |
| Building          | 124,240 | 124,240 | 124,240 | Building          | 124,240 | 124,240 | 124,240 | Building          | 124,240 | 124,240 | 124,240 |
| MSBA              | 97,870  | 97,870  | 97,870  | MSBA              | 97,870  | 97,870  | 97,870  | MSBA              | 97,870  | 97,870  | 97,870  |
| 2016              | 561     | 561     | 561     | 2016              | 561     | 561     | 561     | 2016              | 561     | 561     | 561     |
| 2021              | 669     | 669     | 669     | 2021              | 669     | 669     | 669     | 2021              | 669     | 669     | 669     |
| 2025              | 675     | 675     | 675     | 2025              | 675     | 675     | 675     | 2025              | 675     | 675     | 675     |

| Hosmer Elementary |         |         |         | Hosmer Elementary |         |         |         | Hosmer Elementary |         |         |         |
|-------------------|---------|---------|---------|-------------------|---------|---------|---------|-------------------|---------|---------|---------|
| Category          | 2016    | 2021    | 2025    | Category          | 2016    | 2021    | 2025    | Category          | 2016    | 2021    | 2025    |
| Site              | 346,700 | 346,700 | 346,700 | Site              | 346,700 | 346,700 | 346,700 | Site              | 346,700 | 346,700 | 346,700 |
| Building          | 124,240 | 124,240 | 124,240 | Building          | 124,240 | 124,240 | 124,240 | Building          | 124,240 | 124,240 | 124,240 |
| MSBA              | 97,870  | 97,870  | 97,870  | MSBA              | 97,870  | 97,870  | 97,870  | MSBA              | 97,870  | 97,870  | 97,870  |
| 2016              | 561     | 561     | 561     | 2016              | 561     | 561     | 561     | 2016              | 561     | 561     | 561     |
| 2021              | 669     | 669     | 669     | 2021              | 669     | 669     | 669     | 2021              | 669     | 669     | 669     |
| 2025              | 675     | 675     | 675     | 2025              | 675     | 675     | 675     | 2025              | 675     | 675     | 675     |

| Hosmer Elementary |         |         |         | Hosmer Elementary |         |         |         | Hosmer Elementary |         |         |         |
|-------------------|---------|---------|---------|-------------------|---------|---------|---------|-------------------|---------|---------|---------|
| Category          | 2016    | 2021    | 2025    | Category          | 2016    | 2021    | 2025    | Category          | 2016    | 2021    | 2025    |
| Site              | 346,700 | 346,700 | 346,700 | Site              | 346,700 | 346,700 | 346,700 | Site              | 346,700 | 346,700 | 346,700 |
| Building          | 124,240 | 124,240 | 124,240 | Building          | 124,240 | 124,240 | 124,240 | Building          | 124,240 | 124,240 | 124,240 |
| MSBA              | 97,870  | 97,870  | 97,870  | MSBA              | 97,870  | 97,870  | 97,870  | MSBA              | 97,870  | 97,870  | 97,870  |
| 2016              | 561     | 561     | 561     | 2016              | 561     | 561     | 561     | 2016              | 561     | 561     | 561     |
| 2021              | 669     | 669     | 669     | 2021              | 669     | 669     | 669     | 2021              | 669     | 669     | 669     |
| 2025              | 675     | 675     | 675     | 2025              | 675     | 675     | 675     | 2025              | 675     | 675     | 675     |

### Cunniff Elementary School

Site - 106,000 sq. ft.  
 Building - 34,150 sq. ft.  
 MSBA - 56,150 sq. ft.  
 2016 - 315 students  
 2021 - 286 students  
 2025 - 281 students

### Lowell Elementary School

Site - 151,100 sq. ft.  
 Building - 81,720 sq. ft.  
 MSBA - 69,130 sq. ft.  
 2016 - 415 students  
 2021 - 410 students  
 2025 - 404 students

### Hosmer Elementary School

Site - 346,700 sq. ft.  
 Building - 124,240 sq. ft.  
 MSBA - 97,870 sq. ft.  
 2016 - 561 students  
 2021 - 669 students  
 2025 - 675 students





# Watertown School District

## Community Forum Number 2

- I. Welcome and Introduction
- II. Demographics – 5 & 10 year
- III. Watertown Map  
Demographics
- IV. Building Area Comparison
- V. Student & Facility Needs
- VI. Animation - Delivery Models
- VII. Possibilities thus far
- VIII. Next steps



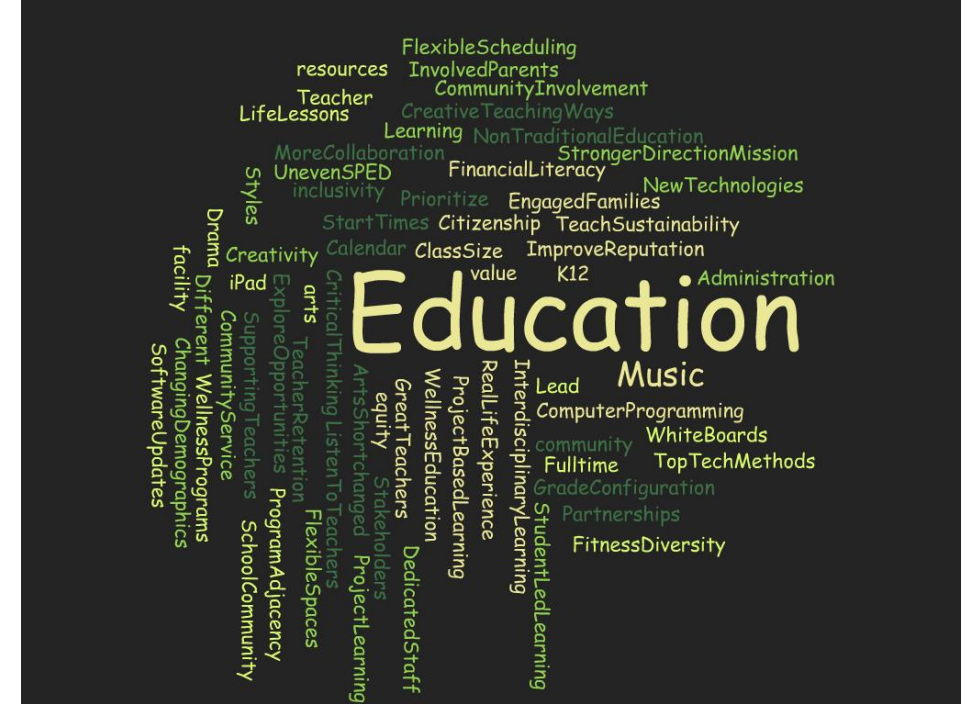


# Watertown School District

## Community Forum Number 2

- I. Welcome and Introduction
- II. Demographics – 5 & 10 year
- III. Watertown Map  
Demographics
- IV. Building Area Comparison
- V. Student & Facility Needs
- VI. Animation - Delivery Models
- VII. Possibilities thus far
- VIII. Next steps

27 July 2016



**Watertown  
School District**

*Community  
Forum  
Number 2*

- I. Welcome and Introduction
- II. Demographics – 5 & 10 year
- III. Watertown Map  
Demographics
- IV. Building Area Comparison
- V. Student & Facility Needs
- VI. Animation - Delivery Models
- VII. Possibilities thus far
- VIII. Next steps

27 July 2016

# Facilities

Learning Gardens  
Creative Existing Spaces  
Neighborhoods  
Green Space  
GYM  
Durable Structure  
ESCO  
Strengths  
Unique Architecture

Need Flexible Spaces  
Environ Controls HVAC  
Integrating Tech Building AGE  
Parking Intergenerational Spaces  
Security  
Acoustics  
Challenges  
Lack Space  
Maintenance  
Handicap Access  
Student Assignment

Space SPECIAL Populations  
Enrollment Flexibility  
Maintain GREEN Spaces  
Sustainability Expand Existing Facilities  
Expand Outdoor Learning  
Intergenerational USES  
Security  
LEED  
Facilities  
Goals  
New Spaces Opportunities  
Teacher INPUT  
Reconfigure Spaces

# Potential

Nice Community  
Addition MS  
Connector Hosmer Borings  
Neighborhood Integration  
Good Maintenance  
Outdoor Spaces  
Warm Architecture  
Schools Proximity  
Facilities  
Retrofitting  
Nice Common  
Natural Lights  
Community Focal Point  
Playgrounds  
Accessible MS

**Watertown  
School District**

*Community  
Forum  
Number 2*

- I. Welcome and Introduction
- II. Demographics – 5 & 10 year
- III. Watertown Map  
Demographics
- IV. Building Area Comparison
- V. Student & Facility Needs
- VI. Animation - Delivery Models
- VII. Possibilities thus far
- VIII. Next steps

27 July 2016



20 Learning Modalities © Fielding Nair International 2007

**1** Independent Study



20 Learning Modalities © Fielding Nair International 2007

**3** Team Collaboration



20 Learning Modalities © Fielding Nair International 2007

**4** One-on-one Learning with Teacher

**Watertown  
School District**

*Community  
Forum  
Number 2*

- I. Welcome and Introduction
- II. Demographics – 5 & 10 year
- III. Watertown Map  
Demographics
- IV. Building Area Comparison
- V. Student & Facility Needs
- VI. Animation - Delivery Models
- VII. Possibilities thus far
- VIII. Next steps

27 July 2016



5 Lecture with Teacher at Centerstage



6 Project-Based Learning



7 Learning with Mobile Technology



8 Distance Learning

**Watertown  
School District**

*Community  
Forum  
Number 2*

- I. Welcome and Introduction
- II. Demographics – 5 & 10 year
- III. Watertown Map  
Demographics
- IV. Building Area Comparison
- V. Student & Facility Needs
- VI. Animation - Delivery Models
- VII. Possibilities thus far
- VIII. Next steps

27 July 2016



20 Learning Modalities © Fielding Nair International 2007

**9** Internet-Based Research



20 Learning Modalities © Fielding Nair International 2007

**11** Performance-Based Learning



20 Learning Modalities © Fielding Nair International 2007

**10** Student Presentation



20 Learning Modalities © Fielding Nair International 2007

**12** Seminar-Style Instruction



**Watertown  
School District**

*Community  
Forum  
Number 2*



**13** Interdisciplinary Learning



**14** Naturalist Learning



**15** Social/Emotional Learning



**16** Art-Based Learning

27 July 2016

- I. Welcome and Introduction
- II. Demographics – 5 & 10 year
- III. Watertown Map  
Demographics
- IV. Building Area Comparison
- V. Student & Facility Needs
- VI. Animation - Delivery Models
- VII. Possibilities thus far
- VIII. Next steps

**Watertown  
School District**

*Community  
Forum  
Number 2*

- I. Welcome and Introduction
- II. Demographics – 5 & 10 year
- III. Watertown Map  
Demographics
- IV. Building Area Comparison
- V. Student & Facility Needs
- VI. Animation - Delivery Models
- VII. Possibilities thus far
- VIII. Next steps

27 July 2016



17 Storytelling (floor seating)



19 Team Learning/Teaching



18 Design-Based Learning



20 Play-Based Learning

# Watertown School District

## *Community Forum Number 2*

- I. Welcome and Introduction
- II. Demographics – 5 & 10 year
- III. Watertown Map  
Demographics
- IV. Building Area Comparison
- V. Student & Facility Needs
- VI. Animation - Delivery Models
- VII. Possibilities thus far
- VIII. Next steps



27 July 2016

# Watertown School District

## *Community Forum Number 2*

- I. Welcome and Introduction
- II. Demographics – 5 & 10 year
- III. Watertown Map  
Demographics
- IV. Building Area Comparison
- V. Student & Facility Needs
- VI. Animation - Delivery Models
- VII. Possibilities thus far
- VIII. Next steps



27 July 2016

# Watertown School District

## *Community Forum Number 2*

- I. Welcome and Introduction
- II. Demographics – 5 & 10 year
- III. Watertown Map  
Demographics
- IV. Building Area Comparison
- V. Student & Facility Needs
- VI. Animation - Delivery Models
- VII. Possibilities thus far
- VIII. Next steps

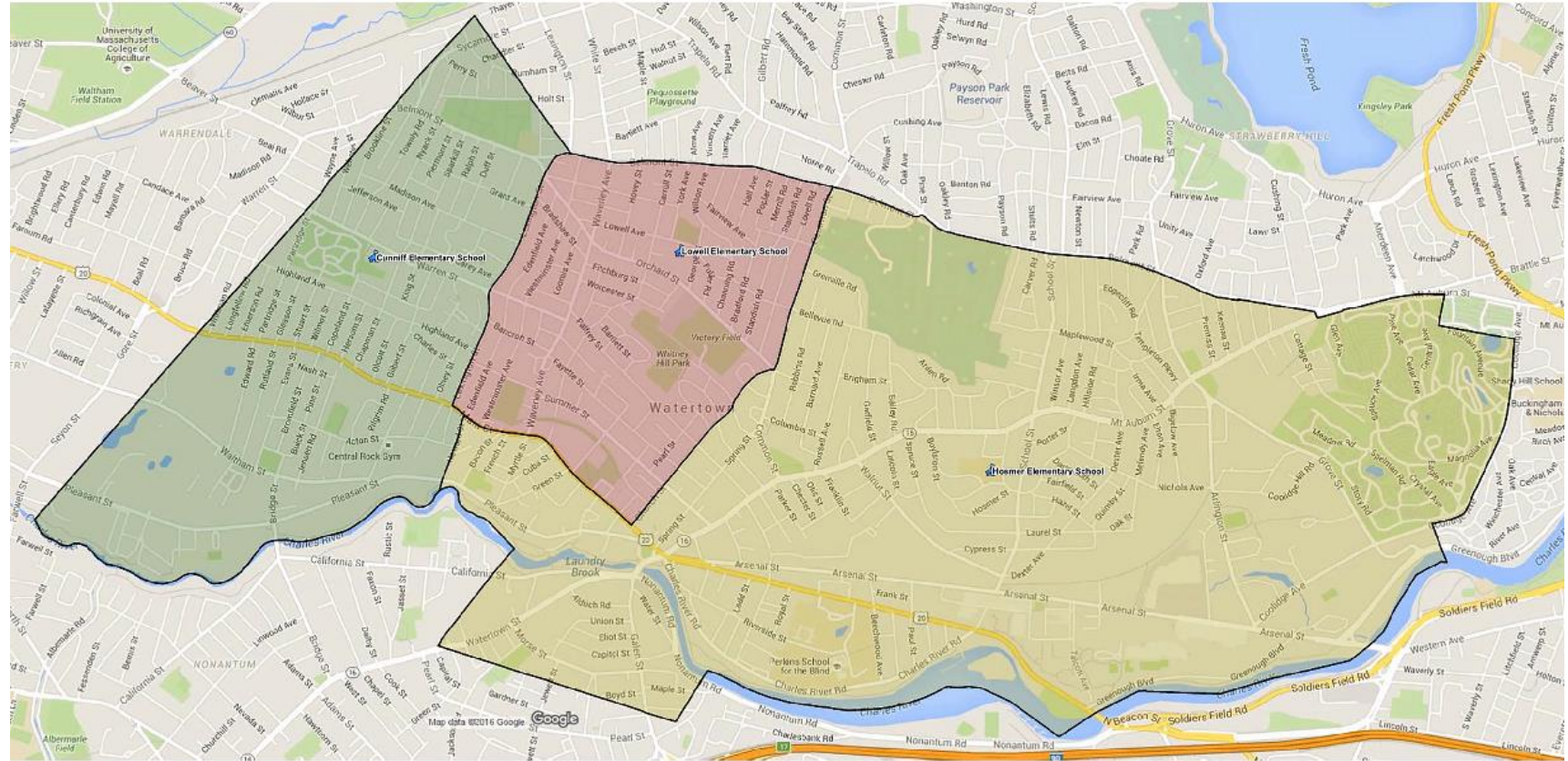


27 July 2016

# Watertown School District

## Community Forum Number 2

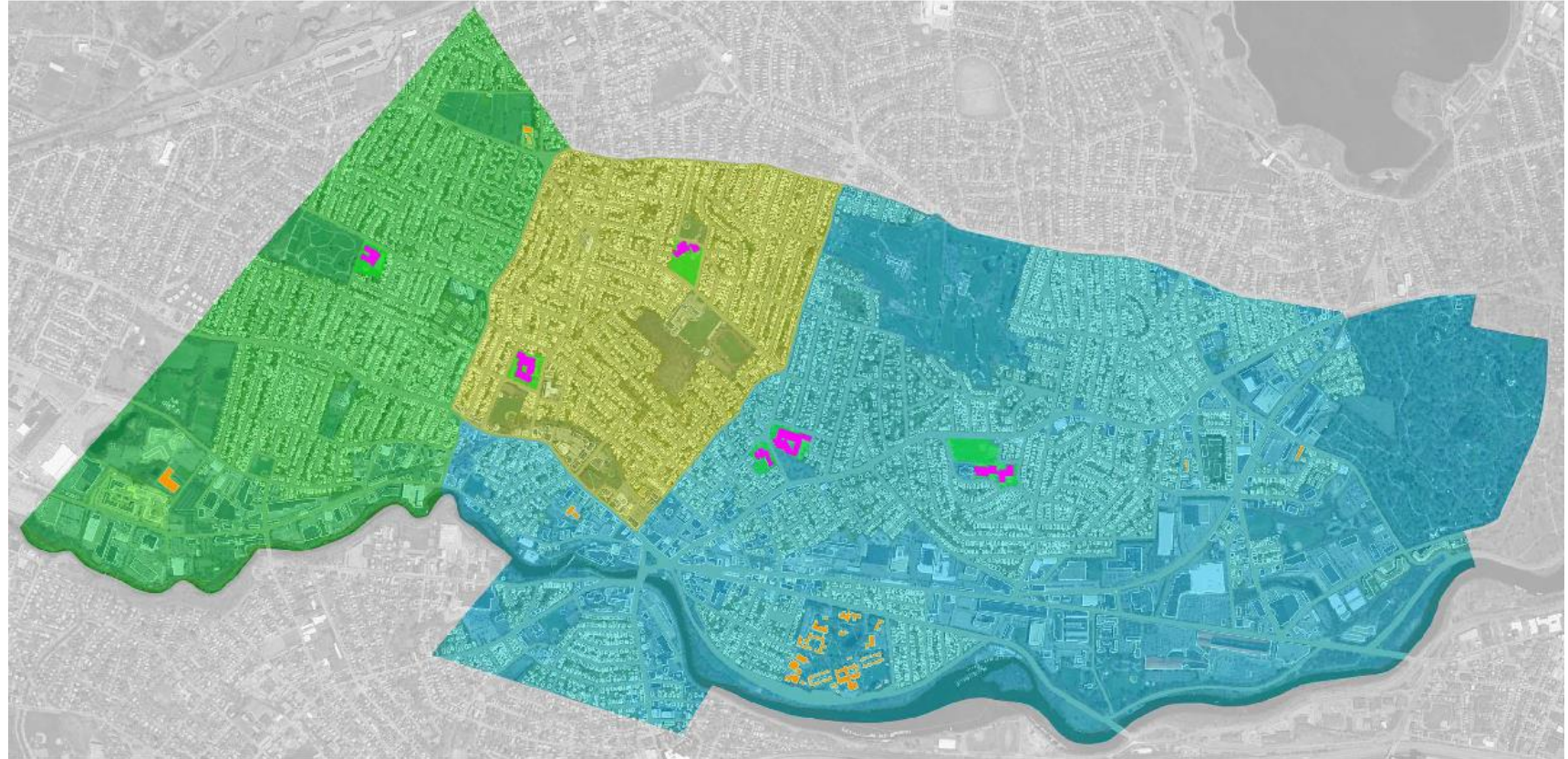
- I. Welcome and Introduction
- II. Demographics – 5 & 10 year
- III. Watertown Map  
Demographics
- IV. Building Area Comparison
- V. Student & Facility Needs
- VI. Animation - Delivery Models
- VII. Possibilities thus far
- VIII. Next steps



# Watertown School District

## *Community Forum Number 2*

- I. Welcome and Introduction
- II. Demographics – 5 & 10 year
- III. Watertown Map  
Demographics
- IV. Building Area Comparison
- V. Student & Facility Needs
- VI. Animation - Delivery Models
- VII. Possibilities thus far
- VIII. Next steps



27 July 2016